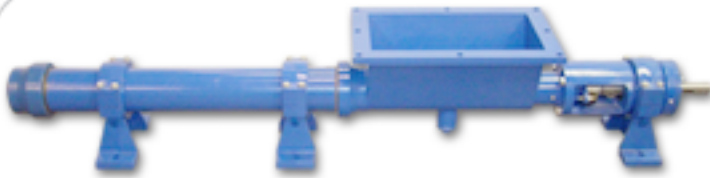




JUSTICE SERIES - LJ8

Progressive Cavity Hopper Pump



Justice LJ8



24-51
GPM

0-225
PSI

Features

- Large Hopper
- Welded Auger
- Hardened Joints
- Packing or Mechanical Seal
- 3-Stage Options
- Steel or Stainless Steel

Materials

Rotor: Tool or Stainless Steel - Chrome-Plated

Stator: Buna, Rubber, Viton™, EPDM

Motor: 3, 5, 7.5, and 10 hp

Inlet: 20" x 10"

Outlet: 4"

Bases: Steel and Stainless Steel



Curves

[Click Links Below](#)

1-Stage
1LJ8

2-Stage
2LJ8

3-Stage
3LJ8



Drawings

[Click Links Below](#)

1-Stage
1LJ8

2-Stage
2LJ8

3-Stage
3LJ8

Pump Description

The Liberty Justice Series Open Hopper Progressive Cavity Pump represents an ideal pumping solution for spent grain for the brewery industry with its ability to pump spent grain for transfer or wine must. Flow rates of 11.7 GPM per 100 Revolutions (24 GPM to 51 GPM) at 225 PSI are standard through the range of the series. The Justice Series offers a design of a heavy-duty auger mated to a rotor and stator for the most difficult pumping applications.

The large rectangular feed hopper design easily accommodates your pumping medium while the non-pulsating design of the product produces a low-shear flow that conveys your medium along effortlessly. Solids in suspension of up to 50% are accommodated by the Auger design.

The modular design of the Justice LJ8 Series Open Hopper Progressive Cavity pump is a hardened pinned-joint drive assembly with a body available in steel or 316 stainless steel and internal wetted components in either stainless steel or hardened tool steel with hard chrome plating for long-life and durability in abrasive pumping applications.

Rotors and Stators for the Justice LJ8 Series are available in 1, 2, and 3 stages for applications with 75, 150, and 225 PSI discharge pressures with stators available in Buna Nitrile, Viton, EPDM and Natural Rubber. The standard seal design is a set of packing with a lantern ring and flush connections. Mechanical Seal options are readily available.

The Liberty LJ8 Progressive Cavity Pump parts are direct aftermarket replacements that dimensionally interchange with the Moyno™ J8 Series, and the Tarby™ TJ8 Series.*

Contact a Liberty Process representative today for more information about the Justice Series.



P: 847.640.7867 F: 847.640.7855

2525 Clearbrook Drive Arlington Heights, IL 60005

www.libertyprocess.com

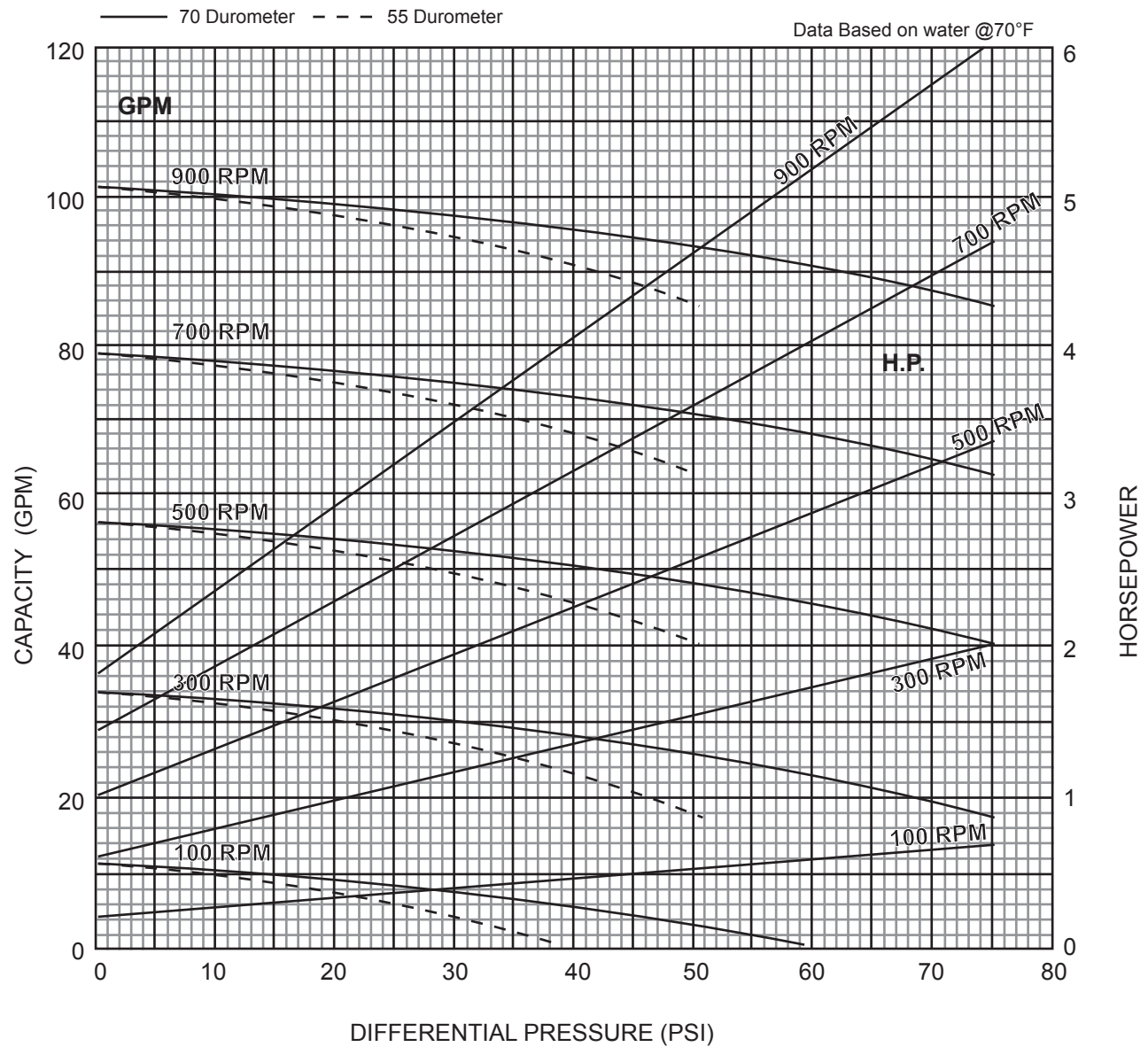


JUSTICE SERIES - 1LJ8

Progressive Cavity Pump

Performance Curves

RPM	100	300	500	700	900
NPSH REQ'D	.8	2.2	3.7	6.9	10.5
MIN. HP	1/2	1-1/2	2	3	5



1 Stage Pump

[BACK TO TOP](#)

P: 847.640.7867 F: 847.640.7855
2525 Clearbrook Drive Arlington Heights, IL 60005

www.libertyprocess.com

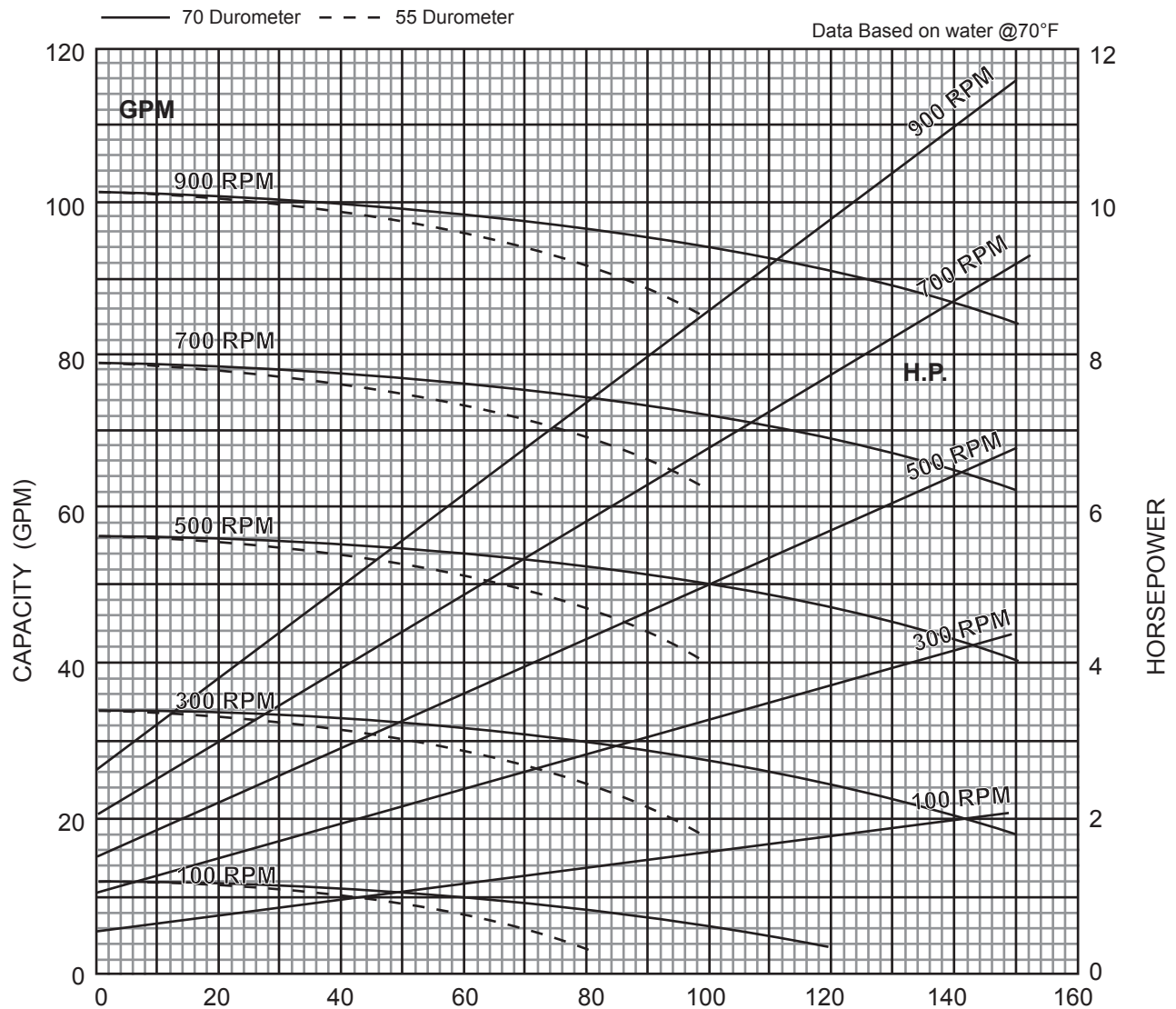


JUSTICE SERIES - 2LJ8

Progressive Cavity Pump

Performance Curves

RPM	100	300	500	700	900
NPSH REQ'D	.8	2.2	3.7	6.9	10.5
MIN. HP	1-1/2	3	5	7-1/2	7-1/2



2 Stage Pump

[BACK TO TOP](#)

P: 847.640.7867 F: 847.640.7855
2525 Clearbrook Drive Arlington Heights, IL 60005

www.libertyprocess.com

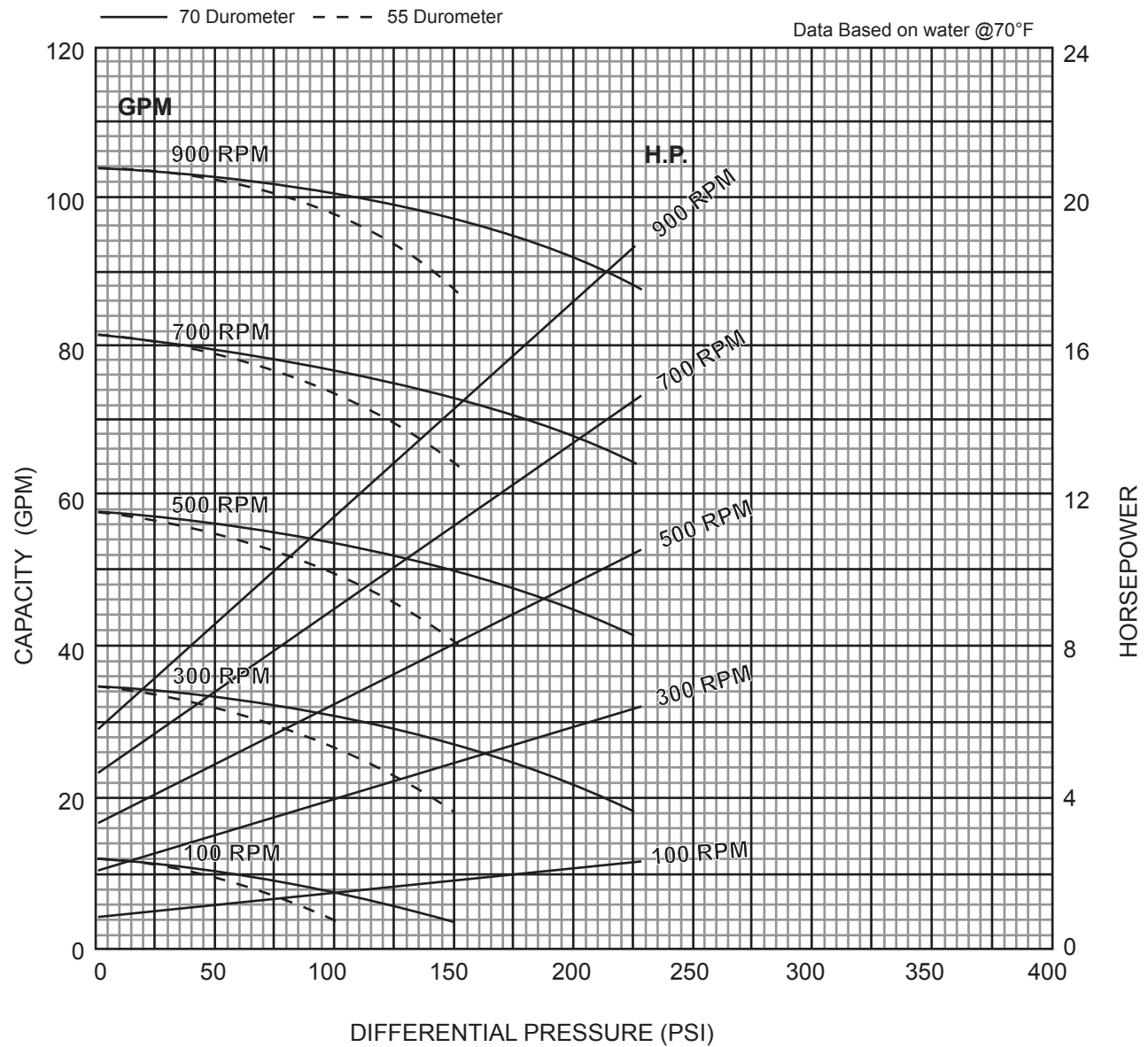


JUSTICE SERIES - 3LJ8

Progressive Cavity Pump

Performance Curves

RPM	100	300	500	700	900
NPSH REQ'D	.8	2.2	3.7	6.9	10.5
MIN. HP	2	5	7-1/2	10	10



3 Stage Pump

[BACK TO TOP](#)

P: 847.640.7867 F: 847.640.7855
2525 Clearbrook Drive Arlington Heights, IL 60005

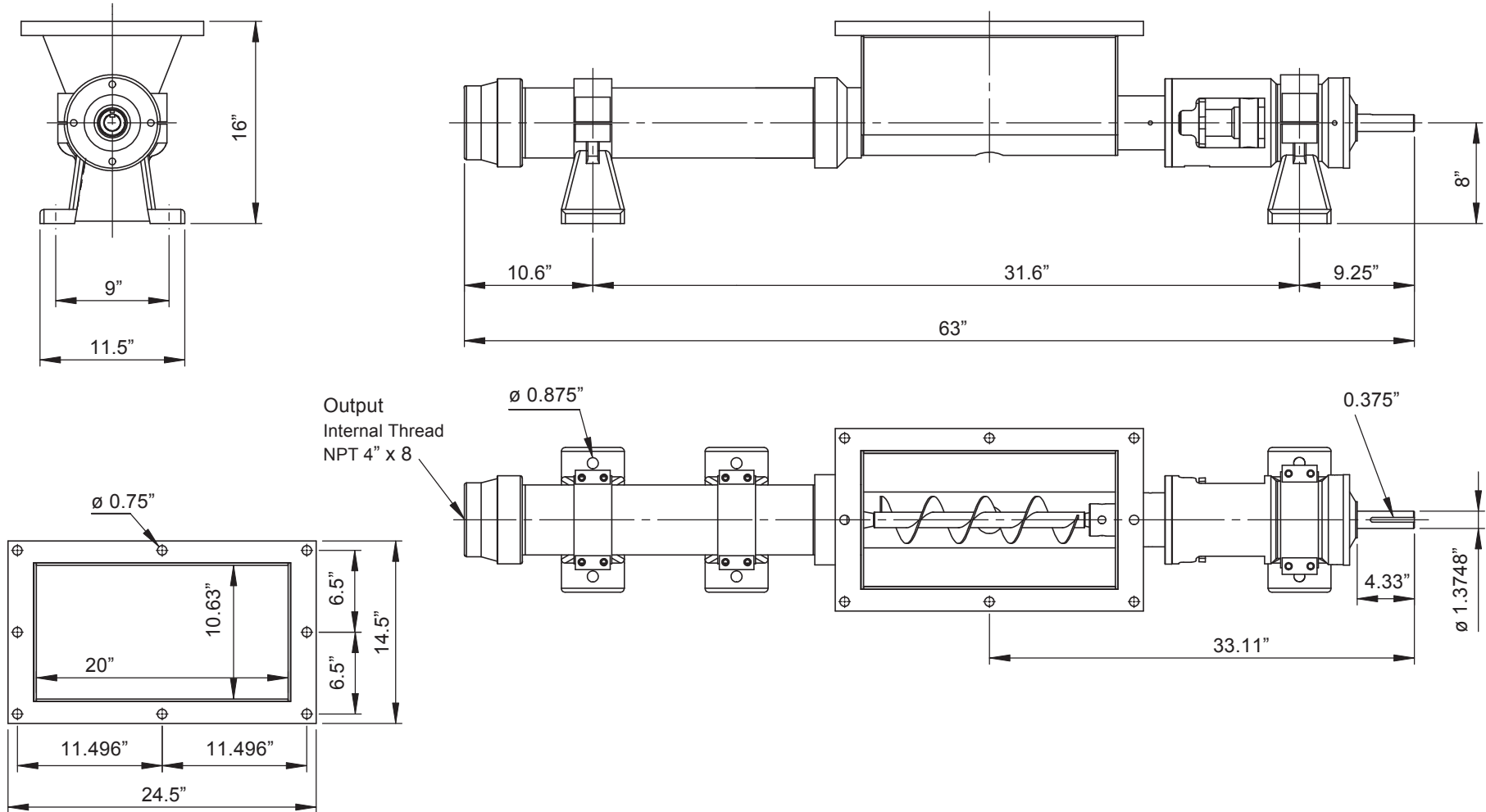
www.libertyprocess.com



JUSTICE SERIES - 1LJ8

Progressive Cavity Pump

Dimensional Drawings



BACK TO TOP

1 Stage Pump

Net weight

≈ lbs.

ALL DIMN: Inches

P: 847.640.7867 F: 847.640.7855
2525 Clearbrook Drive Arlington Heights, IL 60005

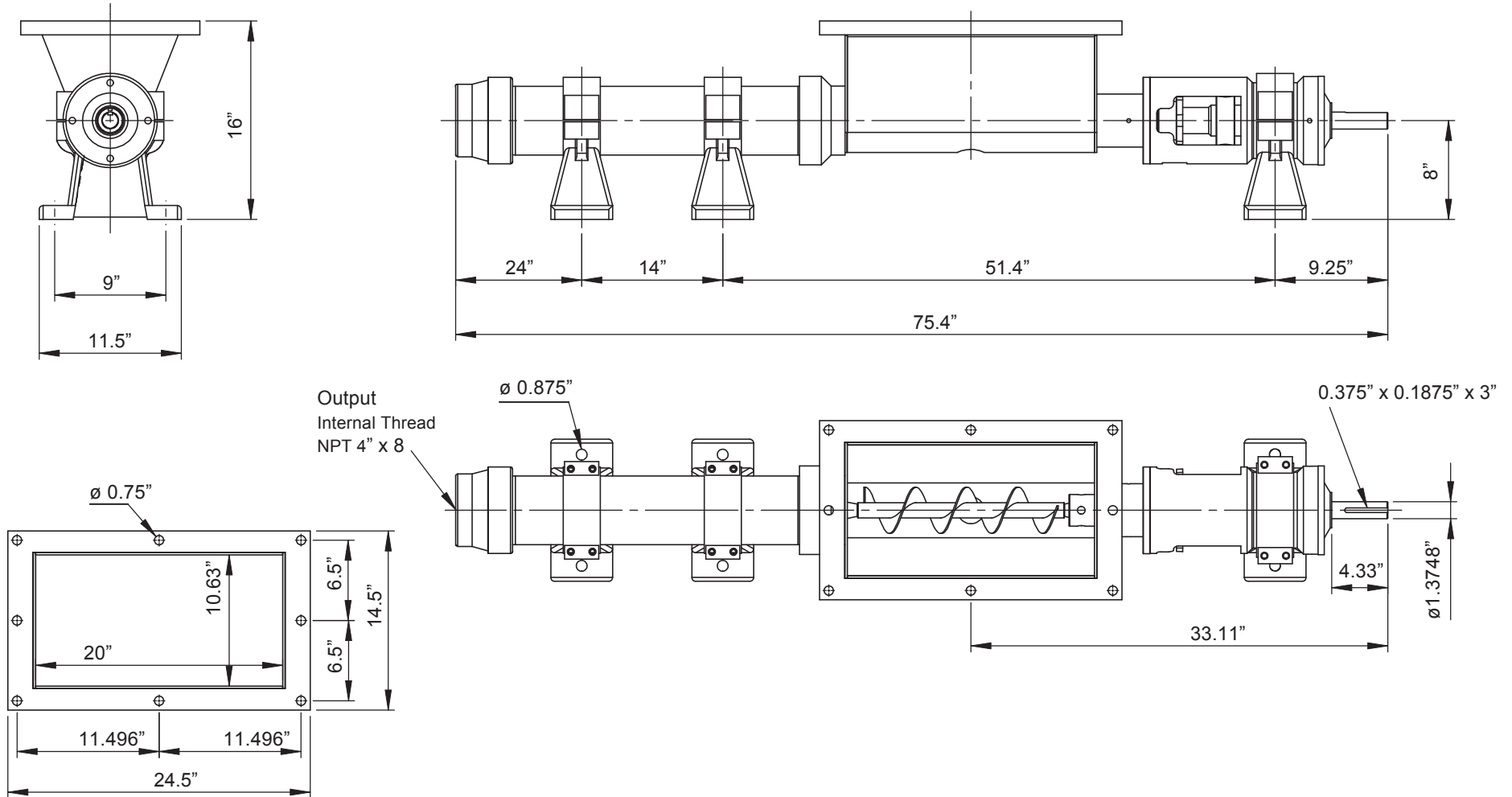
www.libertyprocess.com



JUSTICE SERIES - 2LJ8

Progressive Cavity Pump

Dimensional Drawings



BACK TO TOP

2 Stage Pump

Net weight

≈ lbs.

-

ALL DIMN: Inches

P: 847.640.7867 F: 847.640.7855
2525 Clearbrook Drive Arlington Heights, IL 60005

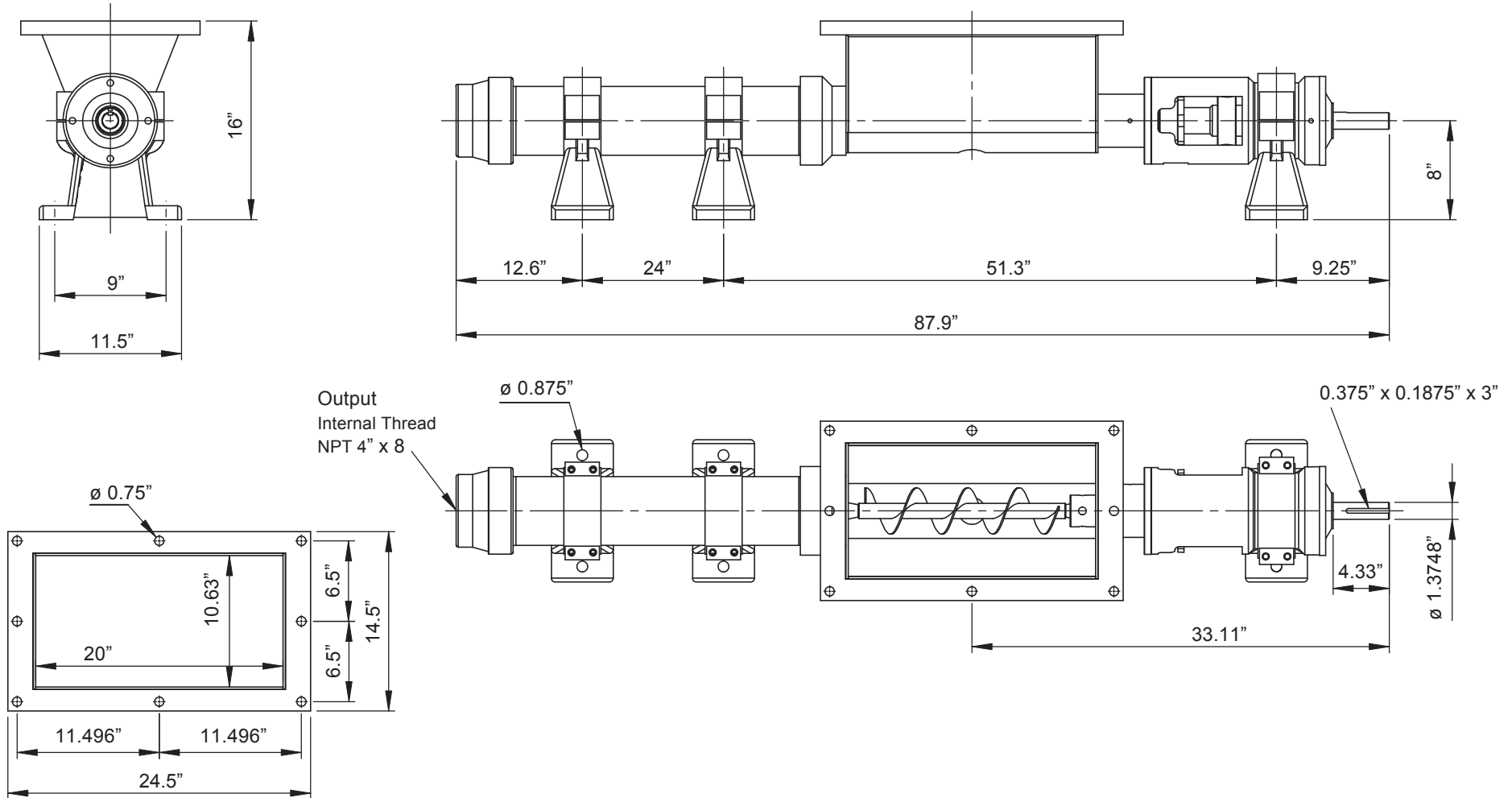
www.libertyprocess.com



JUSTICE SERIES - 3LJ8

Progressive Cavity Pump

Dimensional Drawings



BACK TO TOP

3 Stage Pump

Net weight

≈ lbs.

-

ALL DIMN: Inches

P: 847.640.7867 F: 847.640.7855
2525 Clearbrook Drive Arlington Heights, IL 60005

www.libertyprocess.com